



chicago foundation for woiñen

Annual Report | FY2023

chicago
foundation
for women

140 S. Dearborn Street | Suite 400 | Chicago, IL 60603
info@cfw.org | www.cfw.org | 312.577.2801 | f @

© Copyright 2022 Chicago Foundation for Women. All Rights Reserved.



A Letter from our Board Chair

Chicago Foundation for Women (CFW) has been addressing the issues most affecting the lives of women and girls for nearly 40 years; this is a source of immense pride for our staff, board members, and longtime supporters. This pride, even in the face of challenges, fuels our commitment to the cause. From the second wave of feminism, which championed the liberty to work, to the recent fourth wave, which amplified the voices of women of color and embraced intersectionality, we've witnessed significant momentous shifts in the movement for women's rights. Yet, we recognize that many roadblocks to full equal rights persist, underscoring the importance of our work.

Reproductive Justice is at the center of this work. In Fiscal Year 2023, CFW increased our investment in grassroots organizations whose work is on the ground, of and by the community. We made \$3.4 million in grants; one-third of the total was granted to women of color who led organizations that are working to advance reproductive justice. This impact cannot be understated. Our efforts are guided by a deep commitment to equity and lifting community voices.

The movement for reproductive justice is expansive in nature, confronting healthcare and systemic inequities like economic security, childcare, and gender-based violence that affect individuals' ability to make autonomous decisions about their bodies and lives. At CFW we also consider the intersections among lived experiences of Black, Indigenous, People of Color (BIPOC) and Africana, Latin, Asian, and Native American (ALANA) and the LGBT+ people in Illinois. Our grantees, therefore, are a diverse group, working with women across the comprehensive issues in a reproductive justice agenda, including maternal health, birth justice, sexual and reproductive health education, advocacy to protect reproductive rights, and workplace protections and living wages that sustain themselves and their families, and more.

We remain dedicated to convening intersectional coalitions to advance all aspects of reproductive justice in Chicago. That includes building the leadership, engagement, and power of those who experience the greatest reproductive health disparities and barriers to reproductive freedom: women of color, low-income women, and transgender people. In 2023, CFW continued work to raise significant contributions to support grassroots organizations and offered training and resources to our community to bolster its knowledge of the issues.

To our community of donors: your generous and steadfast support is the backbone of our work. Through your collaboration and continued investment, we can make a tangible difference in the lives of Chicagoland's women, girls, and gender-expansive community. Your contributions are essential to the financial health of our work, serve as a testament to your belief in our mission and are a source of inspiration for our continued efforts.



Jessica Sohl
Chicago Foundation for Women Board Chair



A Pivotal Year for Reproductive Justice:

A Conversation with Dr. Toni Bond

For nearly 40 years, Chicago Foundation for Women (CFW) has funded organizations working for and with their communities to bring reproductive and sexual justice to women, girls, and gender-expansive communities across Chicago. In the wake of the landmark Supreme Court decision overturning *Roe v. Wade*, the landscape of reproductive rights in America has been fundamentally altered. Reproductive Justice Champions (RJC) are a leadership cohort convened by CFW to support Black, Indigenous, People of Color (BIPOC) and Africana, Latin, Asian, and Native American (ALANA) nonprofits and leaders in Illinois working at the intersections of reproductive and sexual justice and other social justice movements.

Dr. Toni M. Bond is Professor of Ethics at Methodist Theological School in Ohio. She has been a social justice activist for over 30 years. In 1994, Dr. Bond was one of the twelve Black women who gave birth to the concept of "Reproductive Justice," creating a paradigm shift in how women of color would add their collective voices to the fight for reproductive autonomy and freedom. She is one of the co-founders, former board chair, and currently the CEO of Interfaith Voices for Reproductive Justice (IVRJ), a national faith-based reproductive and sexual justice organization that works with religious scholars, religious leaders, and grassroots activists to create a culture shift around issues of religion and reproductive and sexual justice. Prior to IVRJ, Dr. Bond was one of the co-founders of the Chicago-based Black Women for Reproductive Justice, which was the first Black RJ group in the country.

A key collaborator on the CFW Reproductive Justice Champion's initiative, Dr. Bond, sat down with us to offer compelling insights on the movement's past, present, and future in a post-*Roe* America.

Dr. Bond recalls the initial shock that reverberated through the community following the reversal of *Roe v. Wade*. "I think a lot of folks are still reeling from that," she reflects, noting the unexpected blow to a right many assumed was secure. The decision has propelled a new generation into leadership roles within the reproductive justice movement, expanding the framework in innovative ways. "They are thinking about where does environmental justice intersect with reproductive justice? Where does Afro futurism intersect with it?"

In Chicago, the RJC cohort, both in its selection of cohort members and its goals, emphasizes the intersectional nature of reproductive justice. Its pillars include the right to have a child, not to have one, and access to the socio-economic resources to ensure families thrive. "Over the years, given what has transpired around various social justice issues," she explained, "varying groups have contributed to the expansion of the reproductive and sexual justice theoretical framework. Violence against women and pregnant capable persons is an RJ issue. Housing insecurity, the right to a living wage, the rights of LGBTQ+ individuals, attacks on access to healthcare for trans individuals, infertility, access to infertility treatment, even student loan debt can all be a RJ issue."

Dr. Bond believes that one of the most pressing challenges in the reproductive justice space is the unrealistic expectation that grassroots RJ organizations, often women of color-led and operating on shoestring budgets, can do the work with minimal funding. Dr. Bond stresses that organizations can only effectively meet the need with more funding. "The expectation that grassroots reproductive justice organizations would do this work on shoestring budgets is not only unfair but unconscionable," she asserts. "Groups need funding. That's what it comes down to."

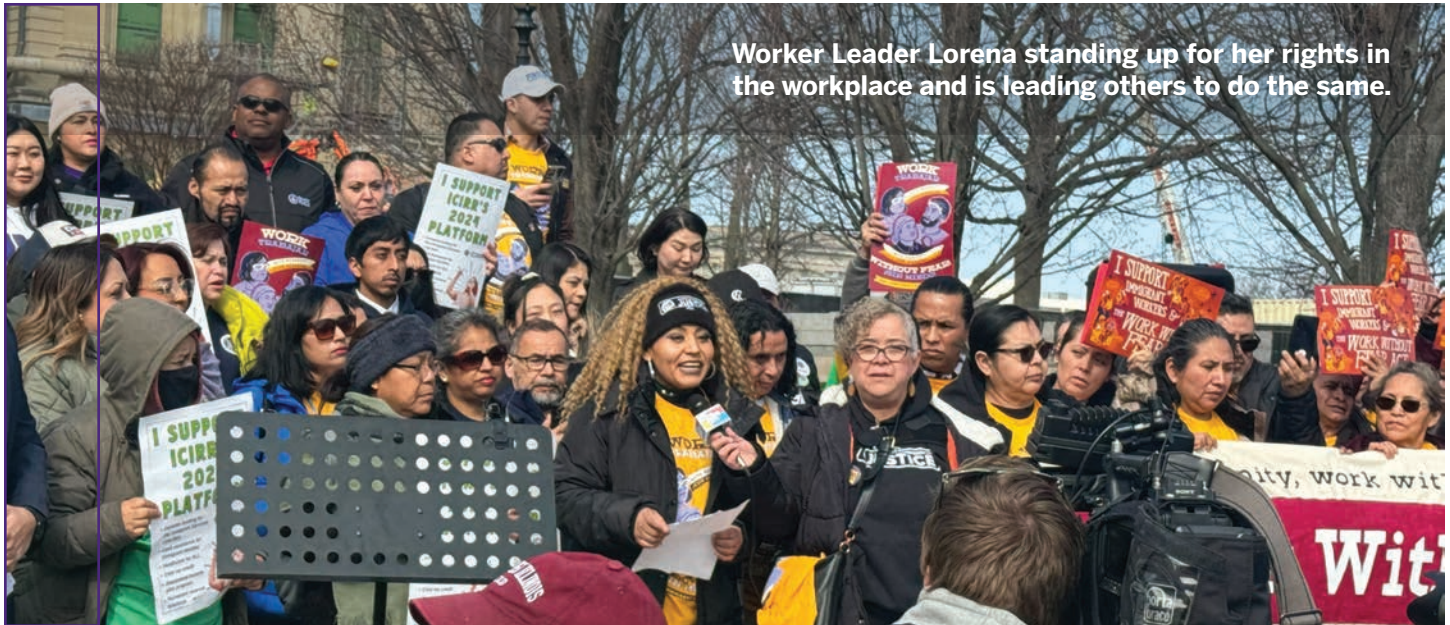
Despite the regressive national trends, can Chicago continue to be a sanctuary for reproductive justice and rights? Dr. Bond points to the historical groundwork laid by numerous advocacy groups for answers. "The fact that Chicago is a safe haven requires looking back. The groundwork, the advocacy work, to ensure that abortion is accessible in Illinois must go back to the Chicago Women's Liberation Union, to the Janes, the advocacy work to push Cook County Hospital to reinstate abortion services, and the work of the Chicago Abortion Fund. It took many, many years, minds, and lots of effort to ensure that Chicago is a haven for abortion care." However, she also points out the limitations within Illinois itself. "When you get outside of Chicago, when you get to parts of downstate Illinois, abortion is not always accessible. So even in Illinois, there's still a tremendous amount of work to be done."

From keeping women and girls free from violence, to securing economic security for caretakers during the COVID-19 pandemic, the RJC cohort is another reflection of how philanthropy--if it is able and willing to be flexible and adaptive to the needs of organizations serving women, girls and gender-expansive communities--can play an essential role in social movements. As CFW looks back on a year of significant upheaval and resilience, the message is clear: the fight for reproductive justice is far from over and our work is more important than ever.

Grantees Spotlight

In the spring 2022 grantmaking cycle, CFW launched a new grant program, Reproductive Justice Champions. With this new initiative, CFW seeks to elevate the expertise, leadership, and lived experiences of Black, Indigenous, People of Color (BIPOC) and Africana, Latin, Asian, and Native American (ALANA) groups in Illinois working at the intersections of reproductive and sexual justice and other social justice movements.

Currently, CFW has supported the Reproductive Justice movement with over 130 grants totaling \$4M. Hear from three of our Reproductive Justice Champions Cohort Members below.



Worker Leader Lorena standing up for her rights in the workplace and is leading others to do the same.

Warehouse Workers for Justice (WWJ) is a non-profit worker center that has been serving workers and communities across Chicago and the surrounding Suburbs into Will County since 2008. WWJ's work is to build power with and for workers in the workplace and in their communities. WWJ connects workers with wraparound services to address their needs inside and outside of the workplace such as: Public health, Record Relief (Sealing and Expungement), Workers Rights workshops, Worker organizing, and overall Worker and Community Safety. WWJ has established history as a trusted presence and resource for workers and the community. WWJ's outreach team has developed a strategy centering community engagement and one-on-one conversations to meet the needs of the warehouse worker population and their families. This work has continued the goal of WWJ; To build strong communities that coexist with a warehousing industry that provides well-paying, safe, and dignified jobs for workers.

"Reproductive and Sexual Health Justice is the fundamental principle of ensuring women's autonomy over our bodies and access to comprehensive healthcare services that address their reproductive and sexual health needs. This entails fostering environments, including workplace settings such as warehouses and logistic hubs, where reproductive health is not merely acknowledged but ingrained as an integral part of the culture. Recognizing that women's rights are inherently human rights."

- Amy Sanchez, Program Director,
Warehouse Workers for Justice

Grantees Spotlight Continued

EverThrive Illinois ensures people from communities most impacted by injustice have the access, resources, health care, and choice to create and sustain healthy families on their own terms. It accomplishes its work by engaging the health care ecosystem through community-driven partnerships, policy action, and systems change.

"Reproductive justice is a framework that centers the experiences of people of color. It is a personal mission and a collective movement. Reproductive justice means that we are working to ensure that everyone is given the human right to maintain bodily autonomy, to choose if/ when/ how to have children, to be guaranteed a safe and healthy birth and to raise our families in a safe and sustainable communities."

- Chi Chi Okwu, MPH
Executive Director, Everthrive Illinois

HEART is one of the only Muslim-led, national nonprofits that builds power with survivors, communities, and institutions to advance reproductive justice and uproot gendered violence, by establishing access and choice for the most affected Muslims. By offering accurate sexual and reproductive health and violence education, advocacy, research, and training, HEART mobilizes people to become agents of change in their own communities and connects them to a network to sustain their empowerment. What began as a local, volunteer-run organization has blossomed into a national movement-focused organization with eight paid staff members and a larger network of trainers, volunteers, and educators.

"I think about reproductive justice as a practice, as an embodiment. While we usually think about reproductive justice as a social justice movement typically "housed" in workplaces, movement spaces, and academia, I think reproductive justice (and injustice) is everywhere. Reproductive justice can be in the doctor's office, when a person has to choose from a series of medical treatments. It can be in the workplace, when caregivers advance their work plans while also ensuring their children are safe, and healthy, and taken care of. It can be in neighborhoods when there is safe housing, access to healthy foods, and adequate play space for children. Reproductive justice (and injustice) is everywhere, and we all play a role in ensuring that it exists."

- Nadiyah Mohajir
Co-Founder and Executive Director, HEART

By the Numbers

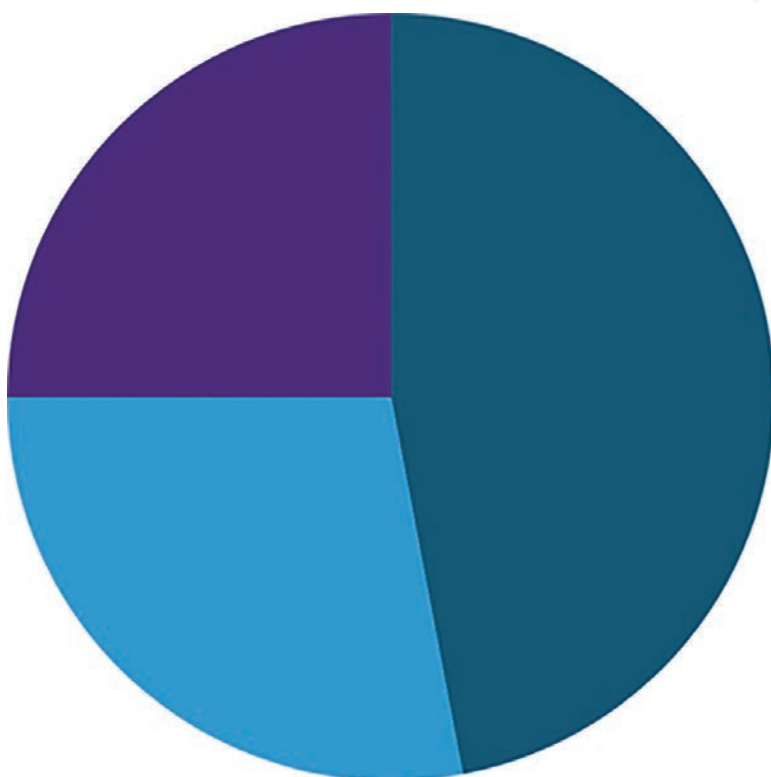
A look into CFW's investments and grants, in 2023.

TOTAL:

\$3,412,100

**202
Grants**

**157
Organizations**



Economic Security
\$1,597,950 | 70 Grants

Health
\$976,950 | 64 Grants

Freedom from Violence
\$837,200 | 68 Grants

\$150K

Giving Council & Circle Investments

308K

Lives Impacted: Women, Men, Transgender
& Gender Nonbinary Individuals

64%

of Grants Awarded to Women
of Color-led Organizations

43%

of Grant Dollars Supported Youth

Statement of Activities

Investment Return (net):
\$903,342 | 11.2%

Program Services:
\$5,531,880 | 84.7%

Change in Net Assets:
\$1,524,419 | 7.1%

Individual Donations:
\$4,206,229 | 52.2%

Fundraising:
\$805,854 | 12.3%

Net Assets Beginning
of the Year:
\$20,165,538 | 93.6%

Corporate & Foundation
Grants: \$2,012,853 | 25%

Management & General:
\$195,662 | 3%

Special Events:
\$853,250 | 10.6%

Other Income:
\$82,141 | 1%

\$8,057,815

Total Support & Revenue

\$6,533,396

Total Expenses

\$21,540,957

Net Assets End of Year

Statement of Financial Position

Cash & Cash Equivalents:
\$2,705,458 | 11.4%

Investments: \$19,173,758 | 80.8%

Receivables: \$1,363,476 | 5.7%

Prepaid Expenses: \$156,794 | .7%

Fixed Assets: \$23,978 | .1%

Right of use asset | operating lease (net):
\$300,445 | 1.3%

\$23,723,909

Total Assets

Accounts Payable: \$1,768,274 | 7.5%

Accrued Expenses: \$32,737 | .1%

Deferred Revenue: \$17,500 | .1%

Obligation under operating lease:
\$364,441 | 1.5%

Net Assets: \$21,540,957

Our Grantees



Catalyst Fund for Reproductive Justice

Chicago Foundation for Women raises dollars to match funds provided by the Groundswell Fund's core program, the Catalyst Fund, a national initiative to bring new funding to Women of Color-led reproductive justice work. Through this partnership, the Foundation provides funds for grants and technical assistance to Chicago-area reproductive justice projects led by Women of Color. This fund amplifies efforts to expand the reproductive justice platform and diversify the voices of communities of color on these issues.

Arise Chicago, \$25,000

Cabrini Green Legal Aid, \$20,000

Chicago Freedom School, \$25,000

Equal Hope, \$43,000

EverThrive Illinois, \$35,000

Illinois Caucus for Adolescent Health, \$42,000

Midwest Access Coalition, \$20,000

National Asian Pacific American Women's Forum, \$35,000

Organizing Neighborhoods for Equality: Northside, \$25,000

Warehouse Workers for Justice, \$20,000

Eleanor Network at Chicago Foundation for Women

The Eleanor Network funding supports women's economic security through a variety of strategies, from direct service to grassroots advocacy.

All Chicago Making Homelessness History, \$50,000

Allies for Community Business, \$15,000

Blue Tin Production, \$15,000

Cara, \$15,000

Center for Changing Lives, \$30,000

Chicago Commons Association, \$40,000

Chicago Women in Trades, \$65,000

Chinese Mutual Aid Association, \$15,000

Communities United, \$20,000

Community Organizing and Family Issues (COFI), \$30,000

Deborah's Place, \$20,000

Enlace Chicago, \$20,000

GirlForward, \$15,000

Girls Inc. of Chicago, \$15,000

Grow Your Own Teachers, \$45,000

Heartland Human Care Services, \$50,000

Jane Addams Resource Corporation, \$75,000

Jane Addams Senior Caucus, \$25,000

Ladies of Virtue, \$20,000

Latino Union of Chicago, \$20,000

LIFT-Chicago, \$30,000

Love, Unity & Values (LUV) Institute, \$15,000

National Able Network, Inc., \$50,000

Northwest Side Housing Center, \$20,000

Of Color Inc, \$10,000

Palenque LSNA, \$15,000

Shriver Center on Poverty Law, \$25,000

Target HOPE, \$20,000

Telpochcalli Community Education Project, \$15,000

Upwardly Global, \$40,000

Women Employed, \$25,000

Women's Business Development Center, \$15,000

Epidemic of Violence: Missing and Murdered Women of Color

Program and general operating support grants supporting community solutions, interventions, and deeper interrogations to understand the root causes of this on-going epidemic.

A Long Walk Home, \$12,000

Illinois Prison Project, \$12,000

Kenwood Oakland Community Organization, \$15,000

Live Free Chicago, \$12,000

Mitchell Museum of the American Indian, \$12,000

Mothers Opposed to Violence Everywhere, \$12,000

The Dreamcatcher Foundation, \$15,000

Women's All Points Bulletin, \$10,000

Englewood Women's Initiative

The Englewood Women's Initiative (EWI) aims to increase the economic security of women living in the Greater Englewood area and their families. Through a strategic alliance of agencies, EWI will equip qualified women with the tools, skills, and resources to put them on a path to good-paying jobs and long-term economic stability.

All Chicago Making Homelessness History, \$60,000

Chicago Furniture Bank, \$20,000

Chicago Women in Trades, \$20,000

Family Rescue, \$30,000

Hustle Mommies, \$20,000

Jane Addams Resource Corporation, \$25,000

Law Center for Better Housing, \$30,000

Metropolitan Family Services, \$30,000

Sista Afya Community Care, NFP, \$25,000

Teamwork Englewood, \$70,000

YWCA Metropolitan Chicago, \$30,000

The General Fund

Grants from the General Fund focus on Chicago Foundation for Women's three key issue areas: economic security, freedom from violence, and access to health services and information for women, girls, trans, and gender non-binary individuals.

Affinity Community Services, \$20,000

Anew: Building Beyond Violence & Abuse, \$15,000

Apna Ghar, Inc. (Our Home), \$20,000

Arab American Family Services, \$15,000

ALAS-WINGS, \$10,000

Assata's Daughters, \$15,000

Awakenings Art, \$10,000

Between Friends, \$20,000

BUILD, Inc., \$15,000

Caring Across Generations, \$15,000

Center for Advancing Domestic Peace, \$20,000

Centro Sanar, \$10,000

Chicago Community Bond Fund, \$15,000

Chicago Community Foundation, \$15,000

Chicago Volunteer Doulas, \$30,000

Chicago Women's Health Center, \$25,000

Children's Best Interest Project, \$15,000

CommunityHealth, \$10,000

Connections for Abused Women and their Children, \$15,000

Crossroads Fund, \$7,500

Darren B. Easterling Center for Restorative Practices, \$15,000

Erie Family Health Center, \$15,000

Family Christian Health Center, \$15,000

Family Rescue, \$15,000

Firebird Community Arts, \$15,000

Fund for Justice dba Chicago Appleseed Center for Fair Courts, \$10,000

Gads Hill Center, \$15,000

Global Girls, Inc., \$10,000

HANA Center, \$15,000

Healing to Action, \$23,500

Heartland Alliance's National Immigrant Justice Center, \$40,000

Illinois Contraceptive Access Now (ICAN!) - a project of AllianceChicago, \$15,000

KAN-WIN, \$25,000
Lake County Crisis Center (A Safe Place), \$15,000
Latinos Progresando, \$20,000
Life is Work, \$12,000
Life Span, \$15,000
LWC Studios, \$15,000
Margaret's Village, \$10,000
Mikva Challenge, \$20,000
Mother & Child Alliance, \$15,000
Mothers' Milk Bank of the Western Great Lakes, \$10,000
Mujeres Latinas en Acción, \$20,000
New Community Outreach, \$10,000
Next Move Community Services, \$10,000
North Suburban Legal Aid Clinic, \$10,000
One Roof Chicago, \$15,000
Peer Health Exchange Chicago, \$15,000

Planned Parenthood of Illinois, \$15,000
Polished Pebbles, \$15,000
Project Exploration, \$15,000
RefugeeOne, \$20,000
Resilience, \$20,000
Roger Baldwin Foundation of the ACLU, Inc., \$20,000
Sarah's Inn, \$15,000
Sista Afya Community Care, NFP, \$16,000
Southside Center of Hope, \$12,000
Syrian Community Network, \$10,000
The Network: Advocating Against Domestic Violence, \$12,000
The Resurrection Project, \$15,000
Women for Economic Justice \$15,000
Women's Justice Institute, \$15,000
Workers Center for Racial Justice, \$12,000
YWCA of Evanston/North Shore, \$15,000

Reproductive Justice Champions

A cohort of Black, Indigenous, People of Color (BIPOC) and Africana, Latin, Asian, and Native American (ALANA) nonprofits and leaders in Illinois working at the intersections of reproductive and sexual justice and other social justice movements.

Assata's Daughters, \$20,000
BA NIA Incorporated, \$25,000
EverThrive Illinois, \$15,000
Gyrls In The HOOD Foundation, \$20,000

HEART Women & Girls, \$20,000
Sexpectations CHICAGO NFP, \$20,000
SisterReach, \$25,000
ReBirth Society, \$20,000

The Rev. Willie Taplin Barrow Fund

The Rev. Willie Barrow Emerging Leaders Award recognizes organizations engaged in innovative work to support and strengthen the leadership of Black women and girls and provide grant funding to further that work.

Free Root Operation, \$25,000

Black Women-led Organization Capacity Building

Capacity building grants to support Black Women leaders to build and implement systematic care structures that include comprehensive benefits packages for organizations and their staff.

Affinity Community Services, \$52,000
Black Girls Dance, \$22,800
Ladies of Virtue, \$65,000

Love, Unity & Values (LUV) Institute, \$65,000
Of Color Inc, \$42,000
Southside Center of Hope, \$49,000

CFW Impact Award

A Long Walk Home, \$5,000

Connections for Abused Women and their Children, \$5,000

RefugeeOne, \$5,000

Urban Growers Collective, \$5,000

Women Employed, \$5,000

Polk Bros. Fund for Emerging Organizations

The Polk Bros. Foundation Fund for Emerging Organizations fosters early growth in promising nonprofits with annual operating budgets below \$75,000.

Debtless NFP, \$2,500

Dwelling at the Well, \$2,500

Free Root Operation, \$3,000.

Pushing Envelopes Chicago, \$2,000

SheWill Legacy NFP, \$2,300

Women Initiating New Directions (WIND), \$2,000

Yo Soy Ella Inc, \$4,500

Fay Clayton Donor Advised Fund

Apna Ghar, Inc. (Our Home), \$3,000

Center for Reproductive Rights, \$5,000

Chicago Abortion Fund, \$5,000

Guttmacher Institute, \$250

Human Rights Watch, \$7,500

Illinois Contraceptive Access Now (ICAN!) - a project

of AllianceChicago, \$7,000

League of Women Voters of Illinois, \$250

Midwest Access Project, \$6,000

Planned Parenthood of Illinois, \$10,000

Roger Baldwin Foundation of the ACLU, Inc., \$20,000

Women Employed, \$5,000

Nancy M. Goodman Donor Advised Fund

CommunityHealth, \$5,500

Giving Joy Inc, \$2,500

Marc and Jeanne Malnati Family Fund

GirlForward, \$15,000

Patty Crowley Fund

Deborah's Place, \$10,000

LBTQ Giving Council

About Face Theatre, \$1,000

Affinity Community Services, \$4,000

One Roof Chicago, \$2,000

Youth Empowerment Performance Project (YEPP), \$4,000

North Shore Giving Circle

Equal Hope, \$8,000

North Suburban Legal Aid Clinic, \$8,000

Open Studio Project, Inc., \$8,000

The Harbour, Inc, \$8,000

South Side Giving Circle

Free Root Operation, \$7,700

Gyrls In The HOOD Foundation, \$5,000

Hustle Mommies, \$7,700

M.E.A.N Girls Empowerment, \$7,700

SheWill Legacy NFP, \$7,700

The Dreamcatcher Foundation, \$5,000

Village Legal and Community Project, \$7,700

South Side Giving Circle Leadership Award

Burst Into Books, Jurema Gorham, \$2,000

Restored Hope: Tameka Walton, \$2,000

Trinity United Church of Christ:
Deborah Muhammad, \$2,000

West Side Giving Circle

Focus Fairies Mentoring, \$10,000

Taproots, Inc., \$10,000

Western Suburbs Giving Circle

Center for Advancing Domestic Peace, \$6,000

Immigrant Solidarity DuPage, \$6,000

Inellas Restoration Center, \$6,000

Magdalene House Chicago, Inc., \$5,000

Young Women's Giving Council

Imagine Englewood if, \$2,000

Yo Soy Ella Inc, \$8,000

Our Donors



Individual Donors

Litsa Adamov
Barbara Adelman
Michelle Adeniyi
Jeannie Affelder and
Jeff Weissglass
Yeonju Ahn
Alicia L. Aiken
Jennifer L. Akhter
Moji Akinde
Heather Alderman
James L. Alexander and
Curtis D. Drayer
Jhmira Alexander
Heather D. Alger
Makkah Ali
Angela M. Allen
Bobbi Allen and Barbara Bostian
Erika Allen
Rebecca Allpow
Sophia AlQuraishi
Miriam Alschuler
Sharon Z. Alter
Lynn Altfeld
Amber Alvarado
Tony Alvarado-Rivera
Rita Alvarez
Nicole Amling
Shelley Amuh
Leslie Anderson
Mary H. Anderson
Nancy E. Anderson
Rita Anderson
Tracie Anderson
Anita Andrews-Hutchinson
Erin and Samuel Ankin
Anonymous
Dr. Veronica M. Appleton
Francie Arenson
Christina Armstrong
Hanna Aronovich
Anita Arora
Simran Arora
Ruth Joy Aruguete
Brenda B. Asare
Lucy and Peter Ascoli
Samantha Asofsky
Morocco B. Assouline
Warda Atroun
Joan Trueheart Bacon
Elianne Bahena
Claudia A. Baier
Alicia C. L. Bailey
Tina Bailey

Tracy Baim
Claudette G. Baker
Sisavanh Baker
Linda Ballard
Saba Bando
Rosie Banks
Jessica Barajas
Beatrice Barbareschi
Akira Barclay
A.J. Barks
Erin Barnett
Denise Barreto
Donna E. Barrows
Holly Bartecki
Virginia T. Bartholomay
Denise Bartolotta
Wisdom Baty
Sarah Batz Dubovsky
Andrea Bauer
Judith Bauer
Ron and Queta Rodriguez Bauer
Julie Baum
Jake Beachum
Mary Beaubien
María C. Bechily and Scott Hodes
Brooke Bechtold
Eve Becker
Priscilla Beecham-Joseph
Diane and Michael Beemer
Amalia Beer
Prudence R. and Francis Beidler
Alexandra M. Beiriger
Diana Beliard
Ellen Stone Belic
Fran Bell
Ellen J. Benjamin and
Frederick N. Bates
Julie Bennink
Morgan Benson
Marissa Berkley
Jose L. Bermudez-Cintron
Teedra Bernard
Cynthia S. Bernardi
Vladimir Bernstein
Maureen Berry
Blanca Berthier
Barbara Best
Verda Bhatti
Michelle L. Bibbs
Bernice L. Billups
Joy Birchette
Lauren and Jenelle Birchlove
Margaret C. Bisberg

Juanna Blackwell
Riley K. Blair
Susan Blake
Erin Blakely
Derrick Blakley
William J. Bleecker
Kemery Bloom
Barbara Bluhm-Kaul
Tamar Bobys
Candace Bode
Heather R. Bodie
Kathy Bolhous
Carolyn Booth
Cathleen A. Booth
Kathy Booton-Wilson
Pamela Bozeman
Matea Bozja
Crystal R. Braboy
David Brackney
Marian Brady
Catherine Braendel
Karen L. Brethauer
Regan Brewer-Johnson
Elizabeth Brill
Claire Broadhead
Kathy Brock
Rebecca Brokmeier
Sherlanda Brooks
Cynthia Broten
Cathy Brovelli
Gail Browder
Anita J. Brown
Danielle Brown
Dawn Dittmar Brown
Kimberly Brown
Mary W. Brown
Paula J. Brown
Romayne C. Brown
Tasha Brown
Keecia L. James Broy
Patty Brummet
Megan Brunner
Nathan J. Buikema
Karin & James Bull
Karen Bullen
Eula Burge
Beatris Burgos
Ann Burnstine
Ramona Burress
Michelle Buscemi
Sharon Bush
Jessica Butler
Karli M. Butler

Hardenia Byrd
Araceli Cabrales-Medina
Andrea Cain
Maggie & Barry Cain
Rachel Calderon
Christine R. Call
Gloria J. Callaci
Pamela Calvert
Monica P. Campbell
Edith Canter and Fred Wellisch
Charles Capen
Evette Cardona and
Mona Noriega
Dr. Patricia M. Carey
Amanda Carlson
Ruth Carlson
Megan Carney
Israel Carunungan
Keri Cascio
Kelly Cassidy
Sara Jane Castro
Ainsley Cathcart
Marilyn Catinella
Juliet Cella
Lorie Chaiten and
Harold Hirshman
Cynthia Chase
Marc Chavez
Judy M. Chernick
JoEllen Chernow
Faris and Christine Chesley
Merril Chesser
Michele Childers
Sung Yeon Choimorrow
John Christian
Tameeka S. Christian
D Clancy
Allison B. Clark
Chartise Clark
Laura J. Clark
Nancy L. Clark
Joan D. Clay
Fay Clayton
Wendy Cleary
Diana L. Clegg
Gizelle Clemens
Kevin Close
Cynthia Y. Cobbs
Sarah Cocco
Gwen G. Cohen
Robin Cohen
Darlene Cohn
Ann Sherby Cole

Deborah B. Cole
 Valerie Colletti
 Michelle L. Collins
 Sharon Collins
 Amanda Colon
 Doris Conant
 Howard Conant
 Josephine and Jerome Conlon
 Jake Connell
 Dolores Connolly and
 Daniel Casey
 Marlys A. Conrad
 Melanee Cooper
 Alice Cooperman
 Leslie Corbett Chenoweth
 Christina Córdova-Herrera
 Corinne Corley
 Terry P. Cosgrove
 Cathleen A. Costello
 Judith S. Cottle
 Bianca Cotton
 Marjorie Craig Benton
 Lina Cramer
 Niky Crawford
 Kennette Crockett
 Regina S. Cross
 Sue Crothers-Gee
 Susan Crown
 Jordan Crumpton
 Peggy L. Cullen
 Celia Cullom
 Jennifer Culotta
 Ann Cummins
 Barbara Flynn Currie
 Jessy Dahl
 Micaela Daly
 Karen D'Angelo
 Lisa D'Angelo
 Nora Darvirris
 Rupa Datta
 Aubrey Davis
 Kathryn Davis
 LaTrice A. Davis
 Shelley A. Davis
 Tanya G. Davis
 Tanya Dawood
 Christina De Jong
 Jacyara de Oliveira
 Melissa H. De Vries
 Susan Deagle
 Karol Dean
 Angela DeBello
 Roxanne J. Decyk and
 Neil Lewis Watts
 Nancy DeDakis
 Carol Hufford Deely
 Leigh Deleonardo
 Cassie Dennis
 Lauren Densham
 Lisa M. Derezinski
 Reshma Desai
 Mary Kay Devine
 Jane S. Dewey
 Nyla Diab
 Evelyn Diaz
 Amina J. Dickerson

Amy T. Dickinson
 Robert N. DiLeonardi
 Emilia DiMenco
 Barnaby Dinges
 Victoria Shire Dinges
 Eleni Dixon
 Lynn Donaldson and
 Cameron Avery
 April K. Donnellan
 Eileen Dordek
 Caitlin Doyle
 Sandra Drake
 Emily Dreke and
 Vince Angermeier
 Chandni Dubal
 Jessyca Dudley
 Sheila Dugan
 Eric Duncan
 Erica Duncan
 Elizabeth Dunn
 Elizabeth & Arthur Duquette
 Dan A. Durkin
 Margaret R. Duval
 Eliza & Timothy Earle
 Eric Edstrom
 Loraine E. Edwards
 Margaret Egan
 Dean and Laura Egerter
 Jillian Eid
 Gail Eisenberg
 Susan Eldrenkamp
 Susan Eleuterio
 Barbara Engel
 Julia Epplin-Zapf
 Wendy Epstein
 Tina M. Erickson
 Gina Lamar Evans
 Courtney Everette
 Patricia G. Ewert
 Eve Ewing
 Claudine Faboyede
 Nina J. Fain
 Kelly Fair
 Susanne Fairfax
 Edith H. Falk
 Alyse Faour
 Karen C. Farm
 Sharon Feigon and Steven Bialer
 Michael Feinerman
 Ellen and Matt Feldman
 Elizabeth Fernandes
 Mel Ferrand
 Kim Fideler Robinson
 Yolanda Fields
 Jean Fies
 Victor Filippini and
 Marlo Del Percio
 Tahjinique Findlater
 Karen Fine
 Fern and Sanford Finkel
 Mary M. Finnegan
 Sunny and Paul Fischer
 Jean Fishbeck and Judy Popvich
 Sarah A. Fisher
 Alison S. Fitzgerald
 Linda May Fitzgerald

Joan Marie M. Flanagan
 Jan Flapan
 Deb Fletcher
 Letticia Flores Poole
 Jean & James Foley
 Julia DeVos Ford
 Julie Forgash
 Julia Forte
 Anjylla Foster
 Adam Fotos
 Monica Fox
 Katherine Frankle
 Anne L. Fredd
 Susan and Paul Freehling
 Donna Frett
 Scotti Friedberg
 Emily B. Friedman
 Carol Frischman
 Tamar R. Frolichstein-Appel
 Alexander Fruchtman
 Elizabeth Fry
 Adrienne B. Furniss
 Rosaura Gabriel
 Kate Galecki
 Catherine A. Galligan
 Sarah Gallik
 Carlos Gamboa
 Bryna G. and Edward P. Gamson
 Grace Garcia
 Ausannette Garcia-Goyette
 Catherine Garner
 Corliss V. Garner
 Porshe Garner
 Maria Garvy
 Cristal A. Thomas Gary
 Erica Garza
 Stephanie J. Gates
 Renee Gatsis
 Susan Gaud
 Martha Gavigan
 Carol Gayle
 Robin Gayle
 Cara Gaziano
 Lauren Genuardi
 Meredith Conant George
 Patti and Mel Gerbie
 Nancy Gerrie
 Angela A. Gershenson
 Monica Getzendanner
 Sarah A. Ghantous
 Nancy Gidwitz
 Leslee Giles
 Gail C. Ginsberg
 Catherine Giugno
 Andrew Glatt
 Sarah Glavin
 Christina Glickman
 Danielle Godar
 Ethel C. Gofen
 Joan Goldstein
 Clare Golla
 David Gomel
 Sarah Hurwit Gomel
 Deborah Good
 Darice Goodwin

Casey Gordon
 Radhika Sharma Gordon
 Mary Lee Gosz
 Nicole Gotthelf
 Anjali Gottreich
 Susan Gottschall
 Chiara Grabill
 Reesheda Graham Washington
 Alexandria Granados
 Karen Granda and John Mrowiec
 Dedrea Gray
 Jennifer Gray
 LaKeisha Gray-Sewell
 Bradley Grcevic
 Judith Green
 Tashay Green
 Delta A. Greene
 Lisa Greene
 Marguerite H. Griffin
 Venita E. Griffin
 Alicia Griffith
 S. Mayumi Grigsby
 Caronina L. Grimbale
 Katherine Grossman
 Brenda and James Grusecki
 Madra E. Guinn Jones
 Joan Gunzberg
 Sonal Gupta
 Alison J. Gutterman
 Sheila Haennicke
 Dean Hagan
 Jeanmarie Hagedorn
 Tania Haigh
 Emma Hajny
 Anne C. Hallett
 Marj Halperin
 Janet Halpin
 Emily Halter
 Kristen Hamer
 Bonnie Hamilton and
 Suzanne Kraus
 Christa Hamilton
 Maureen Stapleton Hammond
 Terakesha Hammond
 Janet and Michael Hanley
 Nancy Hanson
 Eva Haque
 Felicia Hardy
 Vachon Harper-Young
 Deborah Harrington
 Debra D. Harrington
 Denise Harrington
 Geraldine Harris
 Gwen Harris
 KayLynn Harris
 Nancy Harris
 Phyllis and Ian Harris
 Leslie Harro
 Fay Hartog-Levin
 Nancy Harvey
 Harriet Hausman
 Sally Havlis
 Georgina E. Heard-Labonne
 Kathryn G. Heavey
 Meta Hellman

Janet W. Helman
 Kathryn Hempstead
 Farin Henderson
 Tasasha Henderson
 Rena Henderson Mason
 Cara Hendrickson
 Christian B. Hennion
 Susanne Henry
 Nicole L. Herbst
 Adolfo Hernandez
 Elida Hernandez
 Jessica Hernandez
 Daniel R. Hernandez, Esq
 Heather Hewett
 Jennifer Heyside
 Bridget Hickey
 Robin Hicks
 Morven Higgins
 Kathryn Hilbert
 Bette Cerf Hill and Bruce Sagan
 Saroyan Hill
 DeShawna Hill-Burns
 David D. Hiller
 Brock Hillman
 Melissa Hilton and
 Jonathan Parman
 Nancy Gazzolz Hines
 Sarah Hinman
 Catherine Hinterthuer
 Joyce and Rich Hirsch
 Penny Hirsch
 Fraya Lynn Hirschberg
 Nakisha Hobbs
 Lisa Hoffman
 Michael Hoffman
 Elizabeth M. Holland
 Gail Holmberg
 Kim B. Holmes
 Suzanne and David Holmes
 Suzanne Musikantow Holster
 Terrance & Virginia Holt
 Mae P. Hong
 Louvenia Hood
 Nikki Hopewell
 Christopher Hotaling
 Keri Holleb Hotaling
 Virginia A. Hotaling
 Karen S. Hott
 Mary A. Houghton
 Eulalia House
 Bryan Howard
 Brenda Huber
 Bonnie Huff
 Nancy Hughes Moyer
 Becky Huinker
 Tabitha Humphries
 Kim L. Hunt
 Angela Hurlock
 Amy Hutchison
 Jacqueline Huxel
 Kendra and PJ Hyett
 Nancy Ide
 Vivian Irizarry
 Barbara Irwin
 Aisha Ismail

Kim Israel
 Alma Izquierdo
 Alethia Jackson
 Kathleen Jacob
 Oren Jacobson
 Pinky Jain
 Agnes Jankowska
 Eva Janzen Powell and
 Smith T. Powell IV
 Cathy Jaros
 Gregory Jasinski
 Julie Jaskierski
 Ella Jasso
 Alison Jenkins
 Jade H. Jenkins
 Lola Jenkins
 Christopher Jewett
 Irene Jinks
 Mary M. Johns
 Adrienne Johnson
 Brett Johnson
 Carol Johnson and
 Gregory Sultan
 Lejia A. Johnson
 Mary Ann Johnson
 Nancy W. Johnson
 Verlon Johnson
 Zara Johnson
 Zenobia Johnson-Black
 Mekeda Y. Johnson-Brooks
 Annie B. Jones
 Camesha Jones
 Margaret Jones
 Norah Jones
 Norman B. Jones
 Shana Jones
 Christine Jordan
 Abigayil L. Joseph
 Kitty Juda & Paul Marcus
 Nancy Juda & Jens Brasch
 Cynthia A. Judge
 Wrenetha Julion
 Julie Justicz
 Jill Kaiser
 Christine Kalvenes
 Catherine & Gaurav Kamboj
 Kim Kamin
 Sarah Kammerer
 Susan Kamp
 Wanjiku Kamuyu-Anderson
 Susan Kane
 Lisa Kaplan
 Loretta Kalnow Kaplan
 Michaela Kapraun
 Nancy Karp
 Terry & Geoff Kass
 Sara Kasza
 Jackie Kazarian
 Erin Kelley
 Lorraine Kells
 Miriam J. Kelm
 Ellen & Thomas Kenemore
 Elyse J. Kennard-Leavy
 Mary Lou Kennedy
 Sonia Kennedy
 Andi S. Kenney

Priscilla Kersten
 Dennis Kessler
 Helen J. Kessler
 John & Jeanne Kett
 Aalia Khawaja
 Elizabeth Kieff
 Grace Kim
 Ji Hye Kim
 Sophia Kim
 Emily King
 Erin King
 Jennifer C. King
 Norlaine King
 Colby Kingsbury
 Yoni Kirsch
 Dr. Barbara S. Kirschner, M.D.
 Ellie Kirshenbaum
 Lyle Klees
 Julia Klodzinski
 Alyssa Knobel
 Diane Knoepke
 Ana Koff
 Greg and Lynda Kolb
 Sally Kolin
 Sarah Kolo
 Johnna Koso
 Nilesh Kothari
 Sally Meyers Kovler
 Nicole Kowrach
 Elizabeth Kozak
 Rachel E. Kraft
 Gail Arthurs Krahenbuhl
 Joanne and Kevin Krakora
 Kevin Krakora
 Madonna Kramer
 Sarah Krauszer
 Gabriela Kreszczuk
 Iris Krieg and James Hardy
 Suzanne Krill
 Dorothy E. and Alfred F. Kugel
 Jessica Kumar
 Marcia Kunstler
 Susan Kurowski
 Sharon Kurth
 Susan Labaj
 Dana LaChapelle
 Joanna Lakatos
 Mona and Anil Lal
 Keenya Lambert
 Sue Landsittel
 Katherine Lane
 Jennifer Lane Landolt
 Karen Larkin Young
 Angela Larson
 Elizabeth L. Lassar
 Sharon Latson
 Capitola Lau
 Paula J. Lawson
 Rebecca Lawson
 Wende Lawson
 Laurie E. Lawton
 Elaine Leavenworth
 Chereese Ledet
 Austin Lee
 Candy Lee

Catherine Lee
 Eileen M. LeFort
 Paul LeFort
 Lisa Leftwich
 Mrs. Ashley N. Leonard
 Phaedra M. Leslie
 Allison and Brad Levin
 Daniel Levin
 Carole Levine
 Dana Levinson
 Kesha Levy
 Leslie Levy
 Raishon Lewis
 Samantha Lichtman
 Juju Lien
 Lucia Woods Lindley
 Mr. Daniel A. Lindley
 Elizabeth B. Lippitt
 Susan Bloom Lipson
 Lois J. Lipton
 Janice Liten
 Cece Lobin
 Ashley Brodarick Lobo
 Bret Lockerbie
 Susanne Lodgen
 Emily Lonigro
 Katherine M. Lorenz
 Philene Lortz
 Sharon Louis
 Kathryn S. Love
 Marcena W. Love
 Sally Lou Loveman
 Stephanie Love-Patterson
 Allison H. Lowe-Fotos
 Mary B. Lubertozzi
 Olivia Luby
 Nedra Lucas
 Gail and Harry Ludewig
 Connie M. Luecke
 Melinda Lukens
 Paola Lule
 Dr. Gregg Lunceford
 Nancy J. Lynn
 Jill Lyons
 Kerri Machut
 Mary MacLaren
 Bertha G. Magaña
 Tara Magner
 Julia Maher
 Sepora Makabeh
 Christine Malcolm
 Sarah A. Malone
 Miranda and Jed Mandel
 Brigid Maniates
 Barbara Manley
 Wendy Manning
 Anuj Marfatia
 Sylvia & Lawrence Margolies
 Ashley Marine
 Patricia Marks-Lurie
 Breanna Markworth
 Benjamin Marotta
 Elizabeth Marsh
 Hilary Marsh

Jeanne C. Marsh and
Steven K. Shevell
Khaliah Marsh
Anne Love Marso
Amber Martin
Cynthia Martinez
Roxanne M. Martino
Rachael Marusarz
Klaudia Marzec
Pete Maunu
Irma Maunu-Kocian
Megan S. Maxwell
Nichelle Mayberry
Gordon Mayer
Anne Albrecht Mayerfeld
Mary Meg McCarthy
Elissa McCulla
Kathleen McDonald and
Joseph Monahan
Dr. Tiffany L. McDowell
Kristin Mcgill
Lauren McGough
Kendra McGowan
Sally McGuin
Marilyn McIntyre
Diane M. McKeever
Carroll McMahon
Ami McReynolds
Cody McSellers-McCray
Livia Medina
Laura J. Mellencamp
Sarah Menke
Evelyn Mensah
Brittany Steadley Merritt
Michelle E.L. Merritt
Sara Mesirow
Noreen Metcalfe
Kim Metrick
Suzanne Meyer
Jason Mielke
Janet S. Migdow
Arlyn Miller
Dawn H. Miller
Marquis Miller
Melody M. Miller
Rebecca Miller
Sheila Miller
Stephanie J. Slovak Millichap
Zara Mir
Ms. Candida Miranda
Linda Mishoulam
Anita Mital
Tawa J. Mitchell
Melissa Mizel and
Michael Edwards
Erika Moczulewski
Victoria P. Mogil
Barbara Molotsky
Lauren E. Moltz
Elizabeth Monkus
M. Susan Montgomery
Jessi Moon
Jo & Art Moore
Kate M. Moore
Kelly & Ted Moore
Talibah Moore

Kafi Moragne-Patterson
Michelle Morales
Paula J. Morency
Krystal Morgan
Aimee Morrin
Mary Morse and Jim McBride
Susan Morse
Mary F. Morten and Willa J. Taylor
R. Susan Motley
Jeanette Moulthrop
Lisa Moultrie
Serena L. Moy
Will and Julie Mrotek
Bunny and Peter Mudd
Valencia Muhammad
Helen Muhisani
Kathy Munzer
Elizabeth Murin
Sharon K. Murphy
Daniel and Lynn Murray
Kenia Murrieta
Sherisse N. Muse-Prince
Donna T. Myers
Sharon Mylrea
Susan M. Nadis
Michael Narciso
Cosette Nazon-Wilburn
Stephanie Neely
W. Scott Nehs
Brandelyn Nelson
Garcia O. Nelson
Aimee Nemeckay
Veronica Nevarez
Kim L. Nevels
John and Diana Newlin
Christopher Newman
Jerry Newton and
David Weinberg
Kim Nicholas
Bronwyn Nichols Lodato
Catherine Niehaus Palekar
Brian Nierman
Theresa Nihill
Anne Nordholm
Melissa Nuttall
Zorbari Nwidor
Kimberly OBrien
Crystal Odom-McKinney
Mary O'Donnell
Stephanie and
Michael Oettinger
Pamela J. Ohman
Cristina Ohr
Kenneth W. O'Keefe
Gail Landes Okin
Julie Olafson
Marlene Olague
Colleen O'Leary
Sarah and Wallace Oliver
Adrienne Olson
Megan R. Olson
Kevin and Linda O'Neill
Virginia Ormerod
Marie Osadjan and
James Cruger
Nicole Ousley

Ina N. Owens
Angela M. Pace-Moody
Gabriel Pachter
Frances Freeman Paden
Kourtnee Palamore
Nancy Paradiso
Preeti Parhar
Helene Paris
Heather D. Parish
Janis Parisi Luby
Thomas G. Park
Carisa Parker
Martha Pascal
Pam S. Passman
Laura Patterson
Nancy P. Patterson
Elisabeth Payne
Susan A. Payne
Julio Paz
Dana M. Pearl
Sanford Neil Peck
Carol Pedot
Sara Pedron Haba
Audrey L. Peiper
Baris Pekpolat
Courtney K. Pell
Eva Penar
Aurie A. Pennick
Daniella Pereira
Amber Perri
Africa McWilliams Perrin
Jada Peterson
Celene Peurye
Marianne Philbin
Betty Phillips
RoiAnn Phillips
Derek Pieper
Joan Pikas
Julie Platt
Patricia Plautz
Sharon Pluskis
Sarah Poeppel
Jean Pogge
Lauren Polite
Wendy Pollack
Elise Polly
Sheila and Edward Pont
Rebecca Porterfield
Elizabeth Powley
Elizabeth A. Pratt
Carol Prins and John Hart/
The Jessica Fund
Deborah Puntteney
Maridee Quanbeck
Olga Radakovic
Karen M. Radtke
Kathleen Rafferty
Sharon Rafos
Dawn Raftery
Catherine Armbrust Rajcan
Marisa Ramirez
Matt Ran
Anuradha Rana
Erica Rangel
Kim Ratkin

Hedy M. Ratner
Anne K. Ream
Cynthia Reddrick
Nicole R. Reed
Sydney K. Reed
Charles Regan
Zoe Rei and Tom Vasa
Candra Reid-Marshall
Lynn L. Reiner
Eleanor Revelle
Barbara Reynolds
Stacy Reynolds
Sanja Rickette Stinson
Dedra Ries
Debby Rijos
Jennifer Riley
Liz Ring
Silvia Rivera
Viki Rivkin
Kaitlyn Roberts
Robin Roberts
Jean and Bill Robinson
Nicole R. Robinson
Shakara Robinson
Virginia Robinson and
Emile Karafiol
Chiara Rodgers
Janice E. Rodgers
Mark Rodriguez
Nicole H. Rodriguez
Dr. Pier C. Rogers, Ph.D.
Ronald G. and Jill L. Rohde
Julie Roin
Brent Rolland
Vikki Rompala
Susan Rose
Caroline A. Dunn Roselli
Leora and Mort Rosen
Burton X. and Sheli Z. Rosenberg
Linda Rosenbloom
Maya Rosenbloom
Amy Rosenow
Bernadine Rosenthal
Lynne Rosenthal
Ellen Rosin
Dillon Roth
The Honorable Ilana Rovner
Peg Rowe
Hannah Rowell
Carla Rubalcava
Jeffrey C. Rubenstein
Aaron Rubin
Lori P. Rubin
Jean Rudd
Deborah Ruff
Anel Ruiz
April Runft
Bridgette Rutter
Anne C. Ruzicka
Kelly M. Ryan
Shirley Ann Ryan
Alice Young Sabl
Michelle Saddler
Jordan Sadler
Andrea Sáenz

Joan and Frank Safford
 Toi Salter
 Bettylu and Paul Saltzman
 Cassaundra Sampson
 Chelsey C. Sanders
 Christine Sandman Stone
 Mercedes Santos
 Mary Ann and Robert Savard
 Jeff Sayasane
 Jessica Scheele
 Margot Levin Schiff
 Joanna Schiffman
 Judith Feigon Schiffman
 Catherine Schildgen
 Karen M. Schneider
 Carleen Schreder
 Erin Schreur
 Mary Jo Schuler
 Susan H. and
 Charles P. Schwartz, Jr.
 Jennifer Schwierzke
 Kristin Scott
 Lisa T. Scruggs
 Beth Seaman
 Jacquelyn A. Seaman
 Kyle Ann Sebastian
 Megan Seiboldt
 Jody Seidel
 Sara K. Semelka
 Carolyn Sennett
 Ann Serafin
 La'Keisha Gray-Sewell
 Jillian Shallow
 Elizabeth A. Shanahan
 Robyn Shapiro
 Edward Sheedy
 Samuel Sheinfeld
 Shifra Sheinfeld
 Joan Sherman
 Valerie Sherman
 Pamela Sherrod Anderson
 Andrea Sidorow
 Lynn Siegel
 Gabrielle Sigel
 Elizabeth Silvis
 Ilene Simmons
 Maria Simon
 Nicole Sims
 Karen Singer
 Femi Skanes
 Brooke Skinner Ricketts
 Melissa Skoog
 Ada Skyles and Kent Wilcox
 James Slattey
 Emily A. Slavin
 Patricia Costello Slovak
 Christa Small
 Ann E. Smith
 Ebonee N. Smith
 Essence Smith
 Janet Carl Smith
 Joyanna Smith
 Mary Beth Smith
 Melvin Smith
 Rachael Smith

Sacella M. Smith
 Christy Smith-Hall
 Jessica A. Sohl
 Patty Sohl
 Sarvesh Soi
 Unmi Song
 Rassamay Sopha
 Erika Soria
 Lorena Soriano
 Tom Sourlis
 Dorian Spears
 Phasha I. Spencer
 Sara Spoonheim Amit
 Susan Sporte
 Mariyana Spyropoulos
 Carly Stacy
 Ronna Stamm and
 Paul Lehman
 Julia Stasch
 Sheila Staunton
 Judith E. Stein
 Nikki Will Stein
 Anika Sterling Florez
 Dominique Steward
 Isabel Carter Stewart
 Lucy Stieber
 Susan and Jerold Stirling
 Judith Stockdale
 Keaka Stokes
 Donna M. and Thomas H. Stone
 Kim Stone
 Jalen Storey
 Mary Stowell
 Deborah D. Strauss
 Tina Stretch
 Erin C. Gaynor Strick
 Gail Struve
 Dr. Terrill L. Stumpf
 Lawrence J. Suffredin
 Emma Sullivan
 Kathryn Sullivan
 Sandra and Jon Summerbell
 Carol J. Summerfield
 Alison Suzukamo
 LeeAnn Swider
 Caroline Swinney
 Ginny Sykes
 Eleanor Sylvan
 Stephanie E. Szymanski
 Gay Taber
 Sharon Tang
 Dimitra Tasiouras
 Julia Taylor
 Lynn D. Taylor
 Ruby Taylor
 Christina M. Tchen
 Alison Teague
 Adile Ayda Tekeli
 Tracy Teweles
 Casey Thayer
 Leslie Kuhn Thayer
 Noelle Thele
 Janice R. Thomas
 Mary E. Thomas
 Ariel J. Thomas Sansing
 Christine Thompson

Katrina Thompson
 Dhyia Thompson-Phillips
 Gunn Thongniyom
 Monica Thorns
 Sharon Tiknis
 Denail Timms
 Pamela A. Meier Tingley
 Chad and Heidi Tischer
 Mayor Elizabeth Beidler Tisdahl
 Latricia Tolbert
 Allison Torrence
 Paul Torres
 Linda X. Tortolero
 Antoinette Tortorella
 Mario Treto
 Craig Trevelyan
 Jamila Trimuel
 Anna Tuchman and
 Konstantinos Hatzitaskos
 Laura Tucker and
 Peter Giangreco
 Taneka M. Tucker
 Rhonda L. Tullis
 Waldiah Tureaud
 Reven Uihlein-Fellars
 Roberta Ulrich-de Oliveira
 Anat Unruh
 John Upchurch
 Jena Valdetero
 Jill Vance
 Eric Vassilatos
 Risha Vaughn
 Jocelyn Velazquez
 Liliana Velazquez
 Erin Venable
 Jennifer Vidis
 Debra Vines
 Lauren Visco
 Heidi Voelker
 Kathryn Volpi
 Maggie Voves
 Pooja Vukosavich
 Whitney Wade
 Linda Wagner and Janine Hoft
 Damaris Walker
 John Craig Walker
 Debra Walker Johnson
 Sally A. Wallace
 Angela K. Waller
 Melody R. Waller
 Leslie Wallin
 Joanne Walsh
 Ruthie Fell Wander
 Morlie Wang
 Hilary Ward
 Elizabeth K. Ware
 Sarah L. Ware
 Joi Washington
 Sandria Washington
 Robert J. Washlow
 Roberta L. Washlow
 Bronna Wasserman
 Victoria Watkins
 Lynn Watkins-Asiyanbi
 Argia Watson
 Ryan Watson

Greta Weathersby
 Alisa Montgomery-Webb
 Tracy Weems
 Barbara A. Weiner
 Lorryne Weiss
 Val H. Weiss
 Jennifer Welch
 Laura Welch
 Michele Weldon
 M. Blair Wellensiek
 Annette Welsh-Kastner
 Courtney Welton
 Emily Werth
 Carl West
 Sara E. West
 Florence F. Wheeler
 Kristen White
 Renita White
 Sandra White
 Emily White Hodge
 Melissa Widen
 Pamela Wilcher
 Martin Wilk
 Scott Wilkerson
 Terri Wilkerson
 Lauren Williams
 Nubia Willman
 James Wilson
 Claire Winter
 Katherine Wise
 Amy and Jonathan Wishnick
 Vania Wit
 Iris S. Witkowsky
 Jessica Wolcott
 Gretchen M. Wolf
 Sallie Wolf
 Mary Wondolowski
 Pauline Wong
 Tina Wong
 Ann Marie Wright
 Stephanie Wright
 Pamela Wylangowski
 Melinda Lupfer Yachnin
 Nancy Yang
 Caren Yanis
 Aaron Yao
 Rhea Yap
 Stephanie Yesnik
 Lora York
 Pat Yuzawa-Rubin
 Gilberto Zamora
 Nannette V. Zander
 Cynthia Zeltwanger and
 Robert Tomes
 Wenny Zhang
 Kirk Ziehm
 Wendy Zinn



Institutional Donors

1871: Chicagoland
Entrepreneurial Center
A Long Walk Home, Inc.
AbbVie Inc
Aditi Foundation
Aksents By Muse
Alpha Omicron Pi at
The University of Chicago
Alzheimer's Association
Illinois Chapter
Amazon
AmazonSmile Foundation
American Endowment
Foundation
The American Gift Fund
America's Charities
Ameriprise Financial
Anam Foundation
Antares Capital LP
Ariel Investments, LLC
Assents By Muse, LLC
AT&T
Auditorium Theatre
of Roosevelt University
Ava Farwell Trust
Bank of America
Barbara Bluhm-Kaul Foundation
Bechily Hodes Family Foundation
Benevity
Bernstein
Bessemer Trust Company
Betsy McNally Ravenel F
amily Charitable Fund
Bitwise Industries
Black Girls Dance
Blue Cross and Blue Shield
of Illinois
BMO Charitable Fund Program
BMO Harris Bank
The Boeing Company
Bolhous Foundation
Booth Alumni Nonprofit
Consultants (BANC)
Brayer Babe
Buffalo Exchange
Byline Bank
C Community Corporate
Center for Advancing
Domestic Peace, Inc.
Central Park Bar
Chanel Foundation
Charities Aid Foundation
of America
Charles Schwab
Chicago Alliance Against
Sexual Exploitation
Chicago Blackhawks Foundation
Chicago Cares
Chicago Commons
The Chicago Community Trust
Chicago Freedom School
The Chicago Housing Authority

Chicago Urban League
Chicago Women in Trades
Chicago Youth Centers
Chinese Mutual Aid Association
Circle of Service Foundation, Inc.
Coleman Foundation
Comcast Cable
Communications
ComEd
Community Food Navigator
Community Memorial
Foundation
Community Organizing and
Family Issues
Conant Family Foundation
Connections for Abused
Women and their Children
Cretors Family Foundation
Crossroads Fund
Crosstown Fitness
Crown Family Philanthropies
CS Insurance Strategy
Deborah's Place
Deloitte
Delta Sigma Theta Sorority, Inc.
Deutsche Bank Americas
Foundation
Digs with Dignity
Discover Network Marketing
Diversified Energy
Dorothy Downstairs
DuPage Foundation
EDGE Funders Alliance
Edward Jones Trust
Efficiency Reporting
Elevate
The Elizabeth Morse
Charitable Trust
The Elizabeth Morse Genius
Charitable Trust
Emerging Practitioners in
Philanthropy
Empower Illinois
Enova International
Envoy Global
Equal Hope
Facebook
Fidelity Charitable Gift Fund
Fidelity Investments
Fiducient Advisors
Fifth Third Bank
Flash Merch, LLC
The Ford Foundation
Francis Beidler Foundation
Frito-Lay
Full Circle Family Foundation
Gads Hill Center
Genesys Works
Girls Inc. of Chicago
Girls Like Me Project
Girls on the Run - Chicago
GivingForce Foundation

Goldman Sachs & Co.
Goldman Sachs
Philanthropy Fund
Good Heart Work Smart
Foundation
Google, Inc.
Gordon Mayer Communications
Grace and Ivory Co.
Gresham Partners
Groundswell Fund
Hanna Oil & Gas
The Harry and Jeanette
Weinberg Foundation, Inc
HC Technologies
Health Care Service Corporation
Henry Crown & Company
Hollander-Urbach Family
Foundation
Home Chef
Honeybee Foundation
Illinois CPA Society
ImpactAssets
Irving Harris Foundation
It Takes a Village Family
of Schools
J.B. and M.K. Pritzker
Family Foundation
James P. and Brenda S.
Grusecki Family Foundation
Jasculca Terman Strategic
Communications
Jenner & Block LLP
Jerome H. Stone Family
Foundation
The Jessica Fund
Jewish Federation of
Metropolitan Chicago
John Burns Construction
Company
The John D. & Catherine T.
MacArthur Foundation
Jonah M Siegelak Family
Foundation
JP Morgan & Co. Inc.
JP Morgan Charitable
Giving Fund
JPMorgan Chase Foundation
K M Herring, PhD
Kabouter Management, LLC
Katten Muchin Rosenman LLP
Kendra Scott LLC
Kenwood Oakland Community
Organization
Khecari
KKR & Co. Inc.
Kovler Family Foundation
KPMG LLP
Lakshmi Foundation
Law Center for Better Housing
The Lehman-Stamm
Family Fund
Leo S. Guthman Fund
Life Span
Lifetime Fitness

Lloyd A. Fry Foundation
M.E.A.N. Girls Empowerment
Marc and Jeanne Malnati
Family Foundation
Margot Lyn Pritzker
Revocable Trust
McDonald's Corporation
McMaster-Carr Supply
Company
Merrill Lynch
Mesirow Family Charitable
Foundation
Mesirow Financial
Meyer Family Foundation
Microsoft Corporation
Mirasol Accessories
Morgan Stanley Global
Impact Funding Trust, Inc.
Morton College
Mothers Opposed to
Violence Everywhere
Mujeres Latinas En Acción
National Association of
Counties
National Financial Services LLC
National Philanthropic Trust
Nationwide Life Insurance
Company
Northern Trust Company
Northwestern Ob.Gyn
Consultants
Of Color, Inc.
Old National Bancorp
OneCause/Text To Give
Patrick G. and Shirley W.
Ryan Foundation
PayPal Charitable Giving Fund
Peoples Bank
Pershing Advisor Solutions, LLC
Pierce Family Foundation
Planned Parenthood
of Illinois
Plante Moran
Pledgeling Foundation
PNC Financial Corporation
PNC Foundation
Polk Bros. Foundation
Project Style
R&M Consulting LLC
Raise The Bar
Raymond James &
Associates Inc.
RefugeeOne
Res Publica Group
Robert Half Talent Solutions
Robert R. McCormick
Foundation
Rosalind Franklin University
of Medicine and Science
Sahara Enterprises, Inc.
Schneider Electric
Schwab Charitable
Schwab Charitable Fund -
Paula J. Morency

Self-Help FCU
Shriver Center on Poverty Law
Signature Leaders
Skadden, Arps, Slate,
Meagher & Flom LLP
Small Business Majority
Southwest Airlines
Square One Foundation
St. Paul & Minnesota Fund
Start Early
Steele Family Foundation
STS Foundation

Summer Oaks Fund of
DuPage Foundation
Surya Fund
Taproots, Inc.
Tapstone Energy, LLC
Tawani Foundation
Tejas Yoga
Telemus Capital
Thanksgiving Fund
The Albert A. Robin Family
Foundation
The Alford Group, Inc.
The Answer Inc

The Jazz Institute of Chicago
TransUnion L.L.C.
UCAN
Untitled Supper Club
The Upstart Foundation
Vanguard Charitable
Verizon Wireless
Vida Bloom
Vivo Foundation
Vizient
W.K. Kellogg Foundation
Walgreen Company

The Weasel Fund
Weinberg/Newton Family
Foundation
Wells Fargo Private Bank
Whirled Peas Foundation
White Hodge HR, LLC
William & Mary Davis
Foundation
William Blair & Company, LLC
Women Employed
Women's Business
Development Center
YourCause, LLC

Sophia Society Donors

Bobbi Allen and Barbara Bostian
Anonymous
The Estate of Reverend Willie
Taplin Barrow *
The Estate of Irene Bayrach *
María C. Bechily and
Scott Hodes
Ruth K. Belzer *
Frederick N. Bates and
Ellen J. Benjamin
Margaret C. Bisberg
Barbara L. Bostian
Bernadette Chopra and
Vivek Chopra
Marjorie Craig Benton
Joyce Davidson
Jane S. Dewey

Sondra Berman Epstein *
Tina M. Erickson and
Michael A. Krutsch
Edith H. Falk
Martha S. Farley and
Donald C. Farley *
Sunny and Paul Fischer
Joan Goldstein
Gail Hernly
Millicent and Thomas Holmes
Nancy Juda
Polly B. Kawalek
Rachel E. Kraft
Juju Lien
Lucia Woods Lindley *
Laurel Appell Lipkin

Lois J. Lipton
Marcena W. Love
The Estate of Norris "Mike"
Love *
Gail J. Ludewig
The Estate of Nina Martin *
Jo and Art Moore
The Estate of Sally Myers *
Beverly Nachtrieb
Jerry Newton
Jamie Phillippe
Elizabeth B. Phillips
Debra Pizer
Kathleen Johnson Pope
Carol Prins
The Estate of Sylvia M.
Radov *

Hedy M. Ratner
Janice E. Rodgers
Leora Rosen
Lowell Sachnoff * and
Fay Clayton
Carleen L. Schreder
Patricia Costello Slovak
Julia Stasch
K. Sujata and Laurence Marks
Peggy Sullivan *
Pauline Taylor
Laura Tucker and
Peter Giangreco
Elizabeth K. Ware
The Estate of Miriam E. Wirt *
Artemis Foundation

* Deceased

Donor Advised Funds

Eleanor Peterson Fund
Evelyn Appell Lipkin Endowed Fund
Fay Clayton Donor Advised Fund
Hedy and Rose Ratner Fund for Advocacy
Jessica Eve Patt Memorial Fund

Jo & Art Moore Family Advised Fund
Lueavery Partee Fund
Marc and Jeanne Malnati Family Fund
Nancy M. Goodman Donor Advised Fund
Patty Crowley Fund

2023 Board Members

Carmin Awadzi
Joan Bacon
Alicia Bailey
Rebecca Brokmeier
Allison B. Clark (Chair Appointment)
Deborah B. Cole
Regina S. Cross
Tanya G. Davis
Lauren Densham
Jessyca Dudley
Erica Duncan
Georgina Heard-Labonne (Advocacy
Committee, Vice Chair)
Adolfo Hernandez

Keri Holleb Hotaling (Program Committee,
Vice Chair)
Norman Jones
Susan Kurowski
Jill Lyons
Kathleen McDonald
Anita Mital
Michael Narciso (Board Treasurer)
Angela L. Putnam
Silvia Rivera (Board Secretary)
Anel Ruiz
Jessica Sohl (Chair-Elect)
Gretchen M. Wolf
Ann Marie Wright (Chair)

2023 Giving Council & Circle Co-Chairs

Carly Stacy
Marguerite Griffin
Stephanie Oettinger
Stephanie Szymanski
Alicia Bailey
Stephanie Gates
Ariel Thomas Sansing
Tracy Weems
Chartise Clark
Corliss Garner
Reesheda Graham Washington
Claudette Baker
Cassandra Sampson
Dena Byrd
Lauren Genuardi
Julie Olafson
Pinky Jain
Celia Cullom
KayLynn Harris
Elianne Bahena
Yeonju Ahn



2023 Alumnae Council Members

Queta Rodriguez Bauer
María C. Bechily
Ellen Benjamin – Co-Chair
Deborah E. Bennett
Marjorie Benton
Allegra E. Biery
Saundra Bishop
Catherine Braendel
Betsy Brill
Nicholas J. Brunick
Adela Cepeda
Marilyn D. Clancy
Fay Clayton
Vickii Coffey
Gwen Cohen
Valerie Colletti
Judith S. Cottle
Susan Crown
Barbara Dillard
Harlene Ellin
Isa Ellis
Barbara Engel
Edith H. Falk
Sunny Fischer
Polly A. Flinn
Trina M. Fresco
Judy Gold
Sarah Gomel
Radhika Gordon
Cheryl Grace
Marguerite H. Griffin
Kelly Haley
Marj Halperin
Susan S. Hassan
Millicent Holmes
Suzanne Holster
Virginia (Ginny) Holt
Mae P. Hong
Kathy Hurley

Jane M. Hussein Saks
Alejandra L. Ibañez
Nancy Juda
Polly B. Kawalek
Kathryn G. Kennedy
Barbara Kipper
Sally Kovler
Rachel E. Kraft
Andrea S. Kramer
Iris J. Krieg
Leslie Landis
Robin L. Letchinger
Juju Lien – Co-Chair
Lois J. Lipton
Marcena W. Love
Gail Ludewig
Bertha G. Magaña
Tina Manikas
Wendy Manning
Susan Marineau
Dana Mikstay
Patty Moore
Jo Moore
Susan E. Morrison
Mary F. Morten
Jerry Newton
Kelly Norton
Darlene M. Oliver
Nancy Olson
Marie Osadjan
Diana Palomar
Munira Patel
Audrey Peebles
Celene Peurye-Hissong
Marianne Philbin
Jamie Phillippe
Jean Pogge
Kathleen Pope
Gaye E. Preston

Carmen Prieto
Carol Prins
Susan Pritzker
Sylvia Puente
Hedy Ratner
Beth E. Richie
Amalia S. Rioja
Nicole Robinson
Janice E. Rodgers
Leora Rosen
Sheli Z. Rosenberg
Juanita Salvador-Burris
Edna J. Schade
Margot Schiff
Carleen Schreder
Lisa T. Scruggs
Mita D. Shah
Gabrielle Sigel
Anita K. Sinha
Rebecca Sive
Patricia Slovak
Deirdre Joy Smith
Jennifer W. Steans
Barbara Stewart
Donna M. Stone
Jann Stulberg
Tina Tchen
Sharmila Thakkar
Donna J. Thompson
Aylice M. Toohey
Laura A. Tucker
Susana Vasquez
Vanessa J. Weathersby
Blair Wellensiek
Courtney V. Welton
Patricia Yuzawa-Rubin
Nannette Zander
Frances K. Zemans

2023 Staff

Rosemary Adams Director of Communications and Events Marketing

Felicia Davis Blakley President and CEO

Denee Hill Digital Communication Coordinator

Nancy Garcia Individual Giving and Campaign Manager

Marline Johnson Program Officer, Women's Leadership Development

Ilda Lagunas Manager of Special Events

Vanessa Lee Program Officer, Collective Giving

Jessi Moon Chief Development Officer

Jenna Mrotek Development Associate

Yvette Nelson Executive Coordinator

Teni Odunsi Manager of Corporate and Foundation Relations

Wendy Vega-Huezo Manager of Human Resources

Whitney Wade Program Officer, Women's Economic Security

Lora York Senior Program Officer

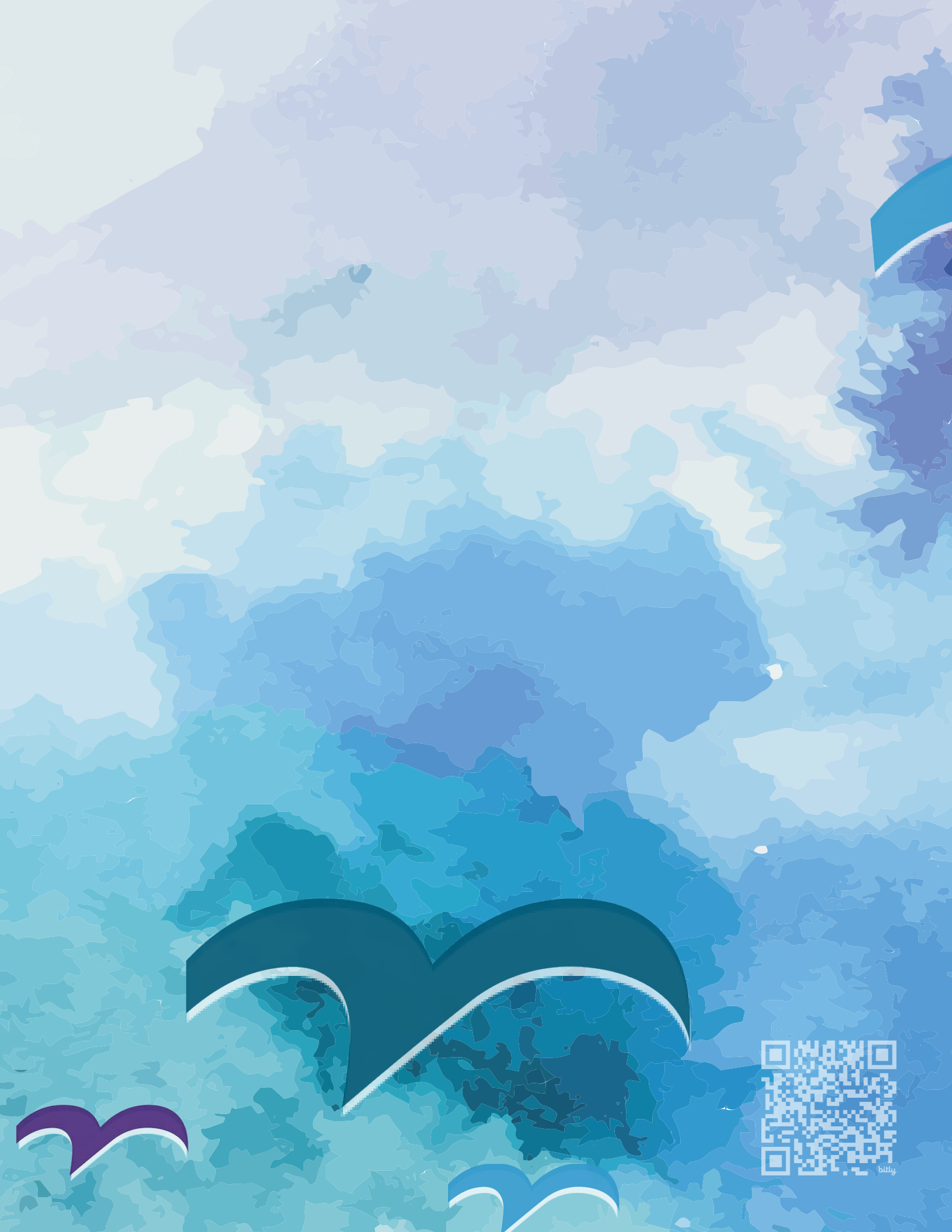
chicago
foundation
for women

140 S. Dearborn Street | Suite 400 | Chicago, IL 60603
info@cfw.org | www.cfw.org | 312.577.2801 | f @

© Copyright 2022 Chicago Foundation for Women. All Rights Reserved.



billy



billy